

Sol 17 20 A.H. →

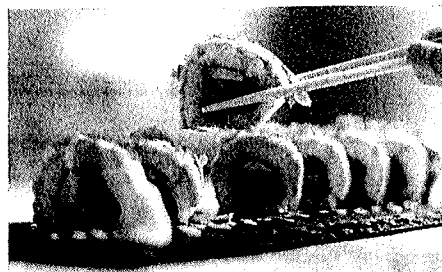
# PART 4

## QUESTIONS 19-24

For each question, choose the correct answer.

### Art you can eat

Yujia Hu was born in China, but moved to Milan, in Italy, when he was eight. His family have a Japanese restaurant there. When Yujia left school, he (19) ..... a course at an art school, but he didn't complete it. (20) ....., he went to work in the family restaurant as a sushi chef. Sushi is a Japanese dish made of rice, with fish and vegetables.



Yujia is a big (21) ..... of basketball, and a few years ago he (22) ..... to start using sushi to make models of the faces of famous players. His next idea was to make little shoes, usually trainers, out of sushi. It (23) ..... him about 30 minutes to make each shoe. Yujia doesn't serve the sushi shoes to customers at his family's restaurant, but he (24) ..... photographs of them online.

- |               |              |           |
|---------------|--------------|-----------|
| 19 A got      | B held       | C began   |
| 20 A Instead  | B Really     | C Maybe   |
| 21 A partner  | B fan        | C member  |
| 22 A believed | B understood | C decided |
| 23 A spends   | B takes      | C delays  |
| 24 A sends    | B shares     | C joins   |

Test 1

**PART 4**

**QUESTIONS 19-24**

For each question, choose the correct answer.

**Philo T. Farnsworth**

Philo T. Farnsworth was born in the USA in 1906. As a child, he was very interested in science and electricity and spent a lot of time **(19)** ..... about it. He also won a national **(20)** ..... for young engineers when he was just 13.

When he was 20, Farnsworth **(21)** ..... his own business. In 1927, he showed everyone his new idea: a **(22)** ..... of sending pictures using electricity. Many other people were working on ideas for a machine to do this, but Farnsworth's was the first that had no moving parts. In fact, it was the first true electronic TV.

After many business problems, Farnsworth had success in 1938 when another company **(23)** ..... him \$1 million for his idea. He is not very famous these **(24)** ..... , but, as the father of electronic television, Farnsworth changed the world.

- |    |            |            |                 |
|----|------------|------------|-----------------|
| 19 | A learning | B studying | C understanding |
| 20 | A game     | B match    | C competition   |
| 21 | A became   | B turned   | C started       |
| 22 | A plan     | B way      | C thing         |
| 23 | A offered  | B took     | C sold          |
| 24 | A times    | B days     | C years         |

Test 2

**PART 4**

**QUESTIONS 19–24**

For each question, choose the correct answer.

**Sally Ride**

Sally Ride was born on 26th May, 1951, in California, USA. After high school, she went to Stanford University to study physics. While she was there, she saw an advertisement in her university newspaper **(19)** ..... women to join the US space programme. Six women, including Sally, were **(20)** ..... to become astronauts. On 18th June 1983, Sally became the first American woman to fly into space. Six days later, on 24th June, she **(21)** ..... to Earth.

When Sally **(22)** ..... working as an astronaut in 1987, she started teaching at the University of California. She wanted to find ways to get more people, **(23)** ..... girls, interested in studying science and mathematics. She also found time to write science books for children about **(24)** ..... space.

- |    |   |            |   |          |   |            |
|----|---|------------|---|----------|---|------------|
| 19 | A | inviting   | B | showing  | C | looking    |
| 20 | A | thought    | B | decided  | C | chosen     |
| 21 | A | completed  | B | returned | C | arrived    |
| 22 | A | ended      | B | closed   | C | stopped    |
| 23 | A | especially | B | exactly  | C | clearly    |
| 24 | A | exploring  | B | going    | C | travelling |